

ESTABLISHMENT OF A FUNCTIONAL RELATIONSHIP FOR ACHA HARVESTER MATERIAL CAPACITY AND ENERGY REQUIREMENT BASED ON MACHINE OPERATING PARAMETERS USING REGRESSION MODELLING APPROACH

TANAM, U. I.¹, ISHOLA, T. A.² and OLAOYE, J. O.²

¹Department of Agricultural and Biosystems Engineering University of Ilorin, Ilorin, Nigeria

²Department of Agricultural and Biosystems Engineering University of Ilorin, Ilorin, Nigeria

¹Corresponding author's email: isaactanam@gmail.com

ABSTRACT

Harvesting acha (*Digitaria exilllis*), a nutritious staple food crop produced in many parts of West Africa, is still being carried out manually because an appropriate harvester is not yet available. Present cereal harvesters cannot be used to harvest acha because of its unique grain characteristics. Several parameters have been reported to influence the performance of grain harvesters, but the most fundamental are the operating speed (V), knife speed (S) and reel index (I). An attempt was made in developing a harvester that could be applied to acha harvesting. It would be essential to be able to predict the performance of the harvester for the purpose of planning, budgeting, and possible adaptation of its parameters to existing cereal crop harvesters to harvesting acha. In this study, a functional relationship between the fundamental operating parameters of the harvester and its material capacity (C_{mat}) and energy requirement (E) was derived. A study of the operation of the machine was made and 3^3 factorial experiment design was used to collect harvesting data. Quantities varied were Operating speed (V)(1,3,5 km/h), Knife speed (S)(300,400, and 500 rpm) and Reel index(I)(1,1.25 and 1.5). Quantities measured were amount of grain gathered and energy consumed. Regression analysis was performed on the data collected while Analysis of Variance (ANOVA) was used to determine the significance of the relationships. Results obtained showed that the relationships were quadratic polynomials with R^2 , R^2a , SE , F -statistic and p -value of 0.94, 0.88, 2.47, 14,49 and 0.0000209 respectively for C_{mat} and 0.73, 0.60, 0.86, 5.93 and 0.0008454 respectively for E . The equations were therefore, considered good for predicting the performance of the harvester.

KEYWORDS: Harvesting, Material capacity, Energy requirement, Acha, Machine operating parameter

1. INTRODUCTION

The performance of a field machine is measured by effectiveness, on the basis of the function it is designed to perform. Effective field capacity is a measure of the rate at which a machine is able to cover the field effectively while performing its designed task (Tanam and Babatunde, 1995; Olaoye and Bolufawi, 2001; Veerangouda *et al.*, 2010 and Olowojola *et al.*, 2011). Performance of a harvester is measured either by the quantity of crop retrieved from the field, referred to as its material capacity, or the amount of losses incurred in the process of harvesting (Junsiri and Chinsuwan, 2009; Abdi and Jalali, 2013).

Performance of a harvester is influenced by several factors that include, but not limited to operating speed or forward travel speed (Hummel and Nave, 1979, cited by Junsiri and Chinsuwan, 2009; Olowojola *et al.*, 2011; Jalali and Abdi, 2014), knife cutting speed (Tanam, 2021), reel index (Chinsuwan *et al.*, 2004; Junsiri and Chinsuwan, 2009), knife – reel clearance

(Quick, 1999; Jalali and Abdi, 2014), knife approach angle (Chattopadhyay and Pandey, 1999; Jalali and Abdi, 2014), reel position ahead of cutter bar, crop density (Yore *et al.*, 2002), timeliness of operation, crop moisture content (Chinsuwan *et al.*, 1997; Sangwijit and Chinsuwan, 2010), crop height (Olowojola *et al.*, 2011), crop maturity, combine harvester threshing and cleaning efficiency (Veerangouda *et al.*, 2010), service life of cutter bar (Klenin *et al.*, 1985) and stem length (Siebenmorgrn *et al.*, 1994). Failure to properly select and adjust these factors leads to considerable losses (Junsiri and Chinsuwan, 2009) and hence low material capacity of the harvester. For a reciprocating cutter bar harvester, the most critical of these factors are operating speed, knife cutting speed and reel index (Tanam, 2021). Predicting the performance of the harvester is essential for proper budgeting of time, money and labour. Several systems exist for predicting the performance of various harvesters designed for various crops, but none exists for *acha* harvesting because *acha* harvesters do not exist. Identified challenges in grain crop harvesting include shattering losses at low moisture and improper selection of machine parameters (Olaoye, 2000; Ogunlowo and Olaoye, 2017; Tanam and Olaoye, 2022; Olaoye and Ariyo, 2020). Operating a mechanical harvester at a considerable high moisture is desirable. The purpose of this study was to derive the relationship that exists between the operating parameters of an *acha* harvester and its material capacity and energy requirement.

2. MATERIALS AND METHODS

Figure 1 shows the schematic diagram of the operation of the harvester. The relevant component of the machine for this study is the reaping unit, carried forward in the direction of travel. The reaping unit consists primarily of a cutter bar and a reel. While the cutter bar blade cuts the stalk, the reel deflects and holds the erect crop in position for cutting and sweeps cut materials onto the transport unit to be conveyed into the collection tank.

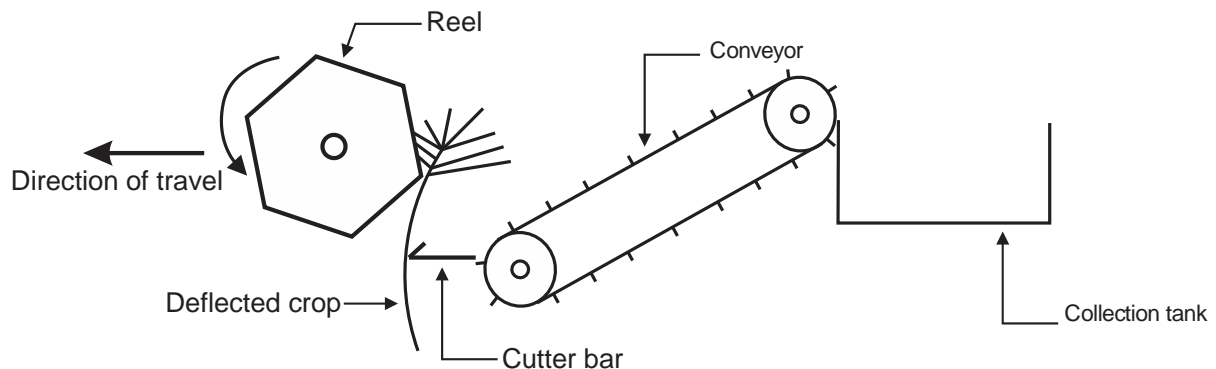


Figure 1: Schematic Drawing of the Harvester Operation

Material in the collection tank was threshed manually with care. The quantity of grain retrieved depends on the machine operating (forward) speed (V), the reciprocating speed of the cutting tool (S), and the rate of sweep of the cut material by the reel away from the cutting region. The rate of sweeping cut material is governed by reel index (I) which is the ratio of reel speed to the forward speed of the machine. A high speed forward speed of the harvester would produce a high field capacity but a low material capacity, because the machine would glide over the crop without cutting. An attempt to sweep cut materials at high reel speed would cause some grains to fall off before the stem is cut. The same would occur when knife speed is excessive. The quantity of material (Q) retrieved by the harvester therefore is a function of these three parameters and be expressed as Equation 1.

$$Q = f(V, S, I) \quad (1)$$

Using the “all possible regression models” procedure described by Larsen (2005), Twenty three polynomial equations were constructed from the three parameters and presented in Table 1.

Table 1: All Possible Models from Three Parameters

Label	Model
A	$y = \beta_0 + \beta_1x_1 + \beta_2x_2 + \beta_3x_3 + \beta_4x_1^2 + \beta_5x_2^2 + \beta_6x_3^2 + \beta_7x_1x_2 + \beta_8x_1x_3 + \beta_9x_2x_3 + \beta_{10}x_1x_2x_3 + \varepsilon$
B	$y = \beta_0 + \beta_1x_1 + \beta_2x_2 + \beta_3x_3 + \beta_4x_1^2 + \beta_5x_2^2 + \beta_6x_3^2 + \beta_7x_1x_2 + \beta_8x_1x_3 + \beta_9x_2x_3 + \varepsilon$
C	$y = \beta_0 + \beta_1x_1 + \beta_2x_2 + \beta_3x_3 + \beta_4x_1^2 + \beta_5x_2^2 + \beta_6x_3^2 + \beta_7x_1x_2 + \beta_8x_1x_3 + \varepsilon$
D	$y = \beta_0 + \beta_1x_1 + \beta_2x_2 + \beta_3x_3 + \beta_4x_1^2 + \beta_5x_2^2 + \beta_6x_3^2 + \beta_7x_1x_2 + \varepsilon$
E	$y = \beta_0 + \beta_1x_1 + \beta_2x_2 + \beta_3x_3 + \beta_4x_1^2 + \beta_5x_2^2 + \beta_6x_3^2 + \varepsilon$
F	$y = \beta_0 + \beta_1x_1 + \beta_2x_2 + \beta_3x_3 + \beta_4x_1^2 + \beta_5x_2^2 + \varepsilon$
G	$y = \beta_0 + \beta_1x_1 + \beta_2x_2 + \beta_3x_3 + \beta_4x_1^2 + \varepsilon$
H	$y = \beta_0 + \beta_1x_1 + \beta_2x_2 + \beta_3x_1^2 + \varepsilon$
I	$y = \beta_0 + \beta_1x_1 + \beta_2x_2^2 + \beta_3x_3 + \varepsilon$
J	$y = \beta_0 + \beta_1x_1^2 + \beta_2x_2 + \beta_3x_3 + \varepsilon$
K	$y = \beta_0 + \beta_1x_1 + \beta_2x_2 + \beta_3x_3 + \beta_4x_1^2 + \beta_5x_2^2 + \beta_6x_3^2 + \beta_7x_1x_2 + \beta_8x_2x_3 + \beta_9x_1x_2x_3 + \varepsilon$
L	$y = \beta_0 + \beta_1x_1 + \beta_2x_2 + \beta_3x_3 + \beta_4x_1^2 + \beta_5x_2^2 + \beta_6x_3^2 + \beta_7x_1x_3 + \beta_8x_2x_3 + \beta_9x_1x_2x_3 + \varepsilon$
M	$y = \beta_0 + \beta_1x_1 + \beta_2x_2 + \beta_3x_3 + \beta_4x_1^2 + \beta_5x_2^2 + \beta_6x_1x_2 + \beta_7x_1x_3 + \beta_8x_2x_3 + \beta_9x_1x_2x_3 + \varepsilon$
N	$y = \beta_0 + \beta_1x_1 + \beta_2x_2 + \beta_3x_3 + \beta_4x_1^2 + \beta_5x_3^2 + \beta_6x_1x_2 + \beta_7x_1x_3 + \beta_8x_2x_3 + \beta_9x_1x_2x_3 + \varepsilon$
O	$y = \beta_0 + \beta_1x_1 + \beta_2x_2 + \beta_3x_3 + \beta_4x_2^2 + \beta_5x_3^2 + \beta_6x_1x_2 + \beta_7x_1x_3 + \beta_8x_2x_3 + \beta_9x_1x_2x_3 + \varepsilon$
P	$y = \beta_0 + \beta_1x_3^2 + \beta_2x_1x_3^2 + \beta_3x_1 + \beta_4x_2 + \beta_5x_3 + \beta_6x_1^2 + \beta_7x_1^2x_3 + \beta_8x_1x_3 + \beta_9x_1^2x_2 + \beta_{10}x_1^2x_2x_3 + \beta_{11}x_1x_2x_3 + \beta_{12}x_2^2 + \beta_{13}x_1x_2 + \beta_{14}x_2x_3 + \varepsilon$
Q	$y = \beta_0 + \beta_1x_3^2 + \beta_2x_1x_3^2 + \beta_3x_1 + \beta_4x_2 + \beta_5x_3 + \beta_6x_1^2 + \beta_7x_1^2x_3 + \beta_8x_1x_3 + \beta_9x_1^2x_2 + \beta_{10}x_1x_2^2 + \beta_{11}x_1^2x_2x_3 + \beta_{12}x_1x_2x_3 + \beta_{13}x_2^2 + \varepsilon$
R	$y = \beta_0 + \beta_1x_3^2 + \beta_2x_1x_3^2 + \beta_3x_1 + \beta_4x_2 + \beta_5x_3 + \beta_6x_1^2 + \beta_7x_1^2x_3 + \beta_8x_1x_3 + \beta_9x_1^2x_2 + \beta_{10}x_1x_2^2 + \beta_{11}x_1^2x_2x_3 + \beta_{12}x_1x_2x_3 + \beta_{13}x_2^2 + \beta_{14}x_1x_2 + \beta_{15}x_2x_3 + \varepsilon$
S	$y = \beta_0 + \beta_1x_3^2 + \beta_2x_1x_3^2 + \beta_3x_2 + \beta_4x_2 + \beta_5x_1^2 + \beta_6x_3 + \beta_7x_1^2x_3 + \beta_8x_1x_3 + \beta_9x_1^2x_2 + \beta_{10}x_1x_2^2 + \beta_{11}x_1^2x_2x_3 + \beta_{12}x_1x_2x_3 + \varepsilon$
T	$y = \beta_0 + \beta_1x_3^2 + \beta_2x_1x_3^2 + \beta_3x_1 + \beta_4x_2 + \beta_5x_3 + \beta_6x_1^2 + \beta_7x_1^2x_3 + \beta_8x_1x_3 + \beta_9x_1^2x_2 + \beta_{10}x_1^2x_2x_3 + \beta_{11}x_1x_2x_3 + \beta_{12}x_1x_2 + \beta_{13}x_2x_3 + \varepsilon$
U	$y = \beta_0 + \beta_1x_1 + \beta_2x_2 + \beta_3x_3 + \beta_4x_1x_2^2 + \beta_5x_1^2x_2 + \beta_6x_1^2x_2x_3 + \beta_7x_1^2x_3 + \beta_8x_1x_2x_3 + \varepsilon$
V	$y = \beta_0 + \beta_1x_2 + \beta_2x_3 + \beta_3x_1x_2^2 + \beta_4x_1^2x_2 + \beta_5x_1^2x_2x_3 + \beta_6x_1x_3 + \beta_7x_1x_2x_3 + \varepsilon$
W	$y = \beta_0 + \beta_1x_1 + \beta_2x_1^2 + \beta_3x_3^2 + \beta_4x_2^2 + \beta_5x_1x_2^2 + \beta_6x_2 + \beta_7x_1^2 + \beta_8x_3 + \beta_9x_1^2x_3 + \beta_{10}x_1x_2 + \beta_{11}x_1x_3 + \beta_{12}x_2x_3 + \beta_{13}x_1^2x_2 + \beta_{14}x_1^2x_2 + \beta_{15}x_1x_2x_3 + \varepsilon$

β_i are coefficients determined by regression analysis and x_1 , x_2 and x_3 represent operating speed, knife speed and reel index respectively while y represent the material capacity or energy consumed. Microsoft Excel 2016 version was used to carry out a multiple regression analyses on the data collected to select the “best” functional relationship between the harvester material capacity and the operating parameters on the one hand, and between energy consumption and the operating parameters on the other. Data collection and analysis were based on the 3^3 Factorial experimental design described by Davies (1956). Table 2 is a general layout for treatments involved in the experiment. Quantities varied were operating speed (V) with values 1, 3, and 5 km/h; knife speed (S) with values 300, 400 and 500 rpm; and reel index (I) with values 1, 1.25 and 1.5, while quantities measured were quantity of grain gathered (Y) and fuel consumption (E). Subscripts 0, 1 and 2 in Table 2 represent low, intermediate and high levels of parameters in each treatment. Each of 27 treatments was performed twice to give a total of 54 runs.

Table 2: Factor Level Combinations for a 3³ Factorial Experiment

Treatments		
V ₀ S ₀ I ₀	V ₀ S ₀ I ₁	V ₀ S ₀ I ₂
V ₀ S ₁ I ₀	V ₀ S ₁ I ₁	V ₀ S ₁ I ₂
V ₀ S ₂ I ₀	V ₀ S ₂ I ₁	V ₀ S ₂ I ₂
V ₁ S ₀ I ₀	V ₁ S ₀ I ₁	V ₁ S ₀ I ₂
V ₁ S ₁ I ₀	V ₁ S ₁ I ₁	V ₁ S ₁ I ₂
V ₁ S ₂ I ₀	V ₁ S ₂ I ₁	V ₁ S ₂ I ₂
V ₂ S ₀ I ₀	V ₂ S ₀ I ₁	V ₂ S ₀ I ₂
V ₂ S ₁ I ₀	V ₂ S ₁ I ₁	V ₂ S ₁ I ₂
V ₂ S ₂ I ₀	V ₂ S ₂ I ₁	V ₂ S ₂ I ₂

Each of the equations were tested for practical utility and the best selected for both material capacity and fuel consumption, fuel consumption being an indication of energy requirement. Adjusted coefficient of determination (R^2_a) was used to select the best function. The relation with the highest value of R^2_a and lowest standard error level was considered the best. Analysis of variance (ANOVA) was used to determine the significance of each equations, while their adequacies verified graphically.

3. RESULTS AND DISCUSION

3.1 Relationship between Material Capacity of the *Acha* Harvester Operating Parameters

Table 3 shows the quantity of grain collected from each run based on the treatment combination levels and arrangement presented in Table 2.

Table 4 shows that all the equations have p-values < 0.01 and are all therefore significant (Larson, 2005), implying that any of them could be selected as good enough relation between the factors. However, in comparing regression equations, the equation with the highest R_a^2 is regarded as most practically useful (Ott and Mendenhall, 1994). The equation selected has $R^2 = 0.94$ and $R_a^2 = 0.88$ with a standard error of estimate of 2.465, which is the lowest in the series. The R^2 obtained is higher than 0.8 described by Gregory and Fedler (1986) as good enough for agricultural experiments. The regression coefficients for this equation giving rise to equation 2 are $\beta_0 = 56.63$, $\beta_1 = -35.04$, $\beta_2 = -10.44$, $\beta_3 = -4.29$, $\beta_4 = -135.23$, $\beta_5 = -0.044$, $\beta_6 = 23.00$, $\beta_7 = -22.20$, $\beta_8 = 143.57$, $\beta_9 = -0.06$, $\beta_{10} = 0.06$, $\beta_{11} = -0.32$, $\beta_{12} = -0.0002$, $\beta_{13} = 0.35$, $\beta_{14} = 0.24$. Therefore the estimated material capacity (C_m) can be described by Equation 2.

$$C_m = 56.63 - 35.04I^2 - 10.442 VI^2 - 4.29I - 135.23V - 0.04S + 23.00V^2 - 22.20V^2I + 143.57VI - 0.06V^2S + 0.06V^2SI - 0.32VSI - 0.00025S^2 + 0.35VS + 0.24SI$$

Table 3: Quantity of *Acha* Grain Harvested based on the 3³ Factorial Experiment (kg/ha)

Quantity grain collected (kg/ha)		
273.60	270.50	266.50
238.87	272.40	245.50
274.50	281.00	270.30
298.70	262.75	271.45
275.05	290.30	265.70
273.4	277.65	267.00
266.00	301.00	271.50
268.70	285.55	269.20
283.20	300.00	270.00
279.45	304.45	243.80
285.00	255.05	200.00
280.34	283.00	205.55
255.70	257.50	179.00
258.75	197.35	190.1
220.35	268.35	208.05
232.25	237.40	213.10
241.50	207.50	199.25
213.55	250.90	201.50

Table 4 is a summary of relevant statistics obtained for each regression equations for material capacity.

Table 4: Summary of Regression Statistics for Material Capacity

Equation	Multiple			Standard		Significance
	R	R ²	Ra ²	Error	F	F
A	0.91	0.83	0.72	3.75	7.63	0.0002073
B	0.90	0.81	0.71	3.79	8.17	0.0001217
C	0.90	0.81	0.72	3.75	9.31	0.0000495
D	0.88	0.78	0.69	3.91	9.45	0.0000470
E	0.88	0.77	0.70	3.89	10.99	0.0000191
F	0.83	0.69	0.61	4.39	9.25	0.0000900
G	0.81	0.66	0.60	4.49	10.58	0.0000619
H	0.73	0.53	0.47	5.17	8.53	0.0005441
I	0.74	0.54	0.48	5.10	9.01	0.0003946
J	0.78	0.61	0.56	4.69	11.97	0.0000634
K	0.90	0.80	0.70	3.87	7.73	0.0001718
L	0.90	0.81	0.71	3.82	7.98	0.0001411
M	0.86	0.75	0.61	4.39	5.58	0.0011866
N	0.89	0.80	0.69	3.94	7.40	0.0002254
O	0.84	0.71	0.55	4.73	4.56	0.0035166
P	0.97	0.94	0.88	2.46	14.49	0.0000209
Q	0.95	0.91	0.82	3.01	10.02	0.0000956
R	0.97	0.94	0.87	2.57	12.40	0.0000833
S	0.63	0.40	0.38	5.57	16.81	0.0003831
T	0.96	0.91	0.83	2.93	10.66	0.0000679
U	0.96	0.93	0.86	2.56	12.42	0.00008327
V	0.96	0.91	0.82	2.97	10.65	0.00006719
W	0.94	0.89	0.80	3.16	9.65	0.00008188

This equation is statistically significant as shown by the F – statistic of 14.49 and P-value of 0.0000209 obtained from the analysis of variance (ANOVA). Equation 2 is considered the best among all tested and is therefore good to predict the *acha* harvester material capacity. The

contribution and direction of each of the parameters and their interaction is shown by the observed coefficients. Operating speed made the highest contribution to the predicted material capacity, though in a negative sense. This is in agreement with the observation of Sangwijit and Chinsuwan (2010) and Jalali and Abdi (2014) in their study of harvester losses in wheat and Khaw Dok Mali 105 Rice variety respectively. This shows that although higher operating speed would increase harvester field capacity, as inferred from Veerangouda *et al.* (2010), it would not necessarily increase material capacity. This can be explained by the fact that high speed of operation would cause the blade to ride over uncut crop before the knife cuts the crop. Knife speed and reel index had similar behaviour. Positive contributions were observed with all two-factor interactions with the interaction between operating speed and reel index being the highest. The explanation is that as forward speed increases, the rate at which the reel sweeps cut material must proportionately equally increase, provided the knife is able to cut at high speed without causing losses. This observation was similar to the observed trend in the result of the investigation of the analysis of the motion of weeding tools and development of a rotary power weeder by Olaoye and Adekanye (2011).

The adequacy or otherwise of Equation 2 was verified by graphical means described by Larsen (2005) and NIST (2013) and some are presented in Figures 2 to 5.

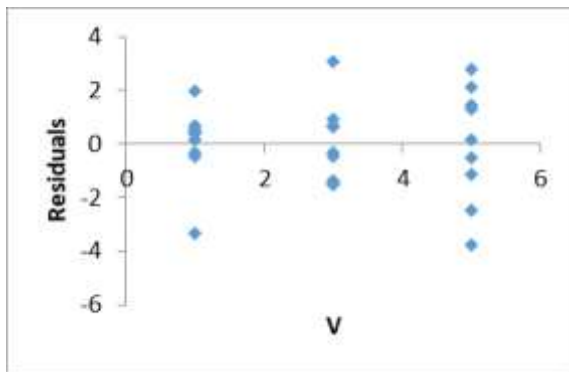


Figure 2: Residual Plot of Operating Speed

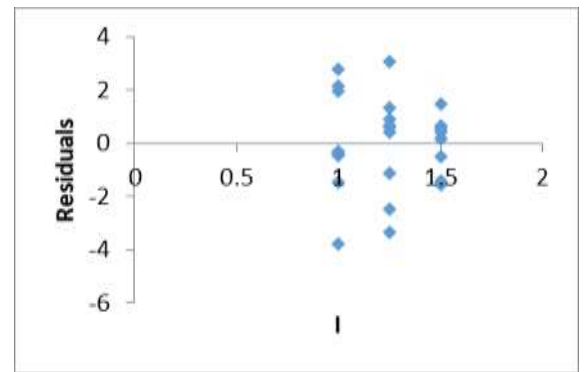


Figure 3: Residual Plot of Reel Index

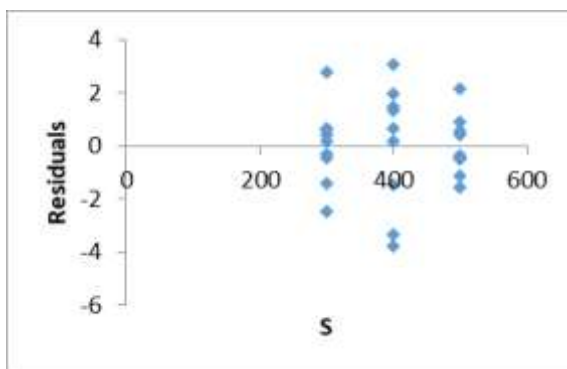


Figure 4: Residual Plot of Knife Speed

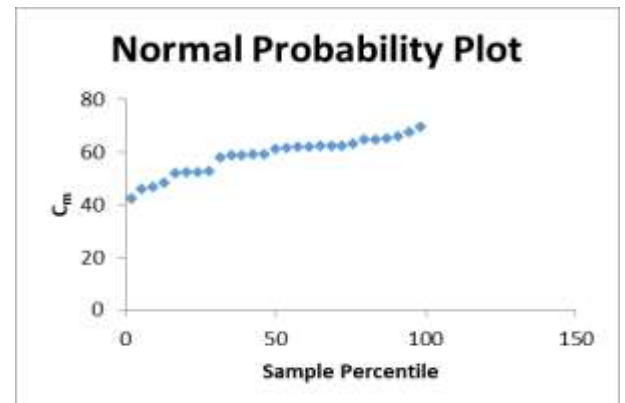


Figure 5: Normal Probability Plot of Material Capacity

The plots of the residuals against the independent variable do not show any traceable pattern. This shows that there is no relationship between the random errors and the predicted observations, thereby satisfying the independence of the random errors criterion. Each of the plots also show that the residuals have equal spread about zero, thereby satisfying the assumption that the residuals have constant variance and zero mean. The normal probability plot of material capacity shows a straight line pattern, indicating that the data obtained were normally distributed. Larson (2005) described equations satisfying these conditions as good.

3.2 Relationship between Energy Consumption of the *Acha* Harvester Operating Parameters

Table 5 shows the quantity of fuel consumed in each run based on the treatment combination levels and arrangement presented in Table 2

Table 5: Quantity of Fuel Consumed based on 3³ Factorial Experiment (l/ha)

Fuel Consumed (l/ha)		
5.17	4.67	4.50
5.00	5.17	4.83
4.67	5.17	4.50
4.67	4.83	4.83
4.17	4.00	4.33
4.50	4.17	3.67
3.83	4.17	3.17
4.17	4.00	3.50
3.83	3.00	3.67
3.17	3.33	3.67
3.50	4.00	4.67
4.00	4.50	5.17
3.33	2.83	3.33
3.00	2.50	3.50
3.67	4.67	3.00
4.17	4.00	3.33
3.33	3.00	3.33
5.00	3.17	2.83

Table 6 is a summary of relevant statistics obtained for each regression equation for fuel consumption.

Table 6 shows that the relation selected as most appropriate for predicting the harvester energy consumption has $R^2 = 0.73$ and $R_a^2 = 0.60$. The statistical utility of the equation is shown by F-statistic = 5.93, which is highly significant with p-value of 0.0008454. The regression coefficients, β_i , for this equation are $\beta_0 = 24.23$, $\beta_1 = -0.000007$, $\beta_2 = 0.003$, $\beta_3 = -0.0035$, $\beta_4 = 0.50$, $\beta_5 = -5.95$, $\beta_6 = -0.02$, $\beta_7 = -6.47$, $\beta_8 = 0.01$

Equation 3 is the derived regression equation for estimating the rate of the harvester fuel consumption.

$$E = 24.23 - 0.000007VS^2 + 0.003V^2S - 0.0035V^2 + 0.50V^2I - 5.95I - 0.02S - 6.47V + 0.01VSI$$

3

Table 6: Summary of Regression Statistics for Fuel Consumption

Equation	Multiple R	R ²	R _a ²	Standard Error	F	Significance F
A	0.78	0.60	0.40	1.07	2.89	0.0284086
B	0.78	0.60	0.43	1.04	3.41	0.0145499
C	0.77	0.60	0.45	1.02	4.04	0.0071977
D	0.72	0.52	0.38	1.08	3.64	0.0131510
E	0.70	0.49	0.45	1.02	11.67	0.0002884
F	0.71	0.51	0.46	1.00	12.25	0.0002158
G	0.70	0.49	0.47	1.00	24.26	0.0000452
H	0.73	0.53	0.47	1.00	8.63	0.0005089
I	0.89	0.79	0.50	0.97	2.73	0.0496069
J	0.88	0.78	0.52	0.95	2.98	0.0327498
K	0.88	0.78	0.55	0.92	3.47	0.0162669
L	0.87	0.75	0.54	0.93	3.55	0.0133892
M	0.87	0.75	0.57	0.90	4.15	0.0061050
N	0.87	0.75	0.59	0.87	4.81	0.0027662
O	0.85	0.72	0.57	0.90	4.76	0.0028255
P	0.86	0.74	0.58	0.89	4.56	0.0036196
Q	0.84	0.70	0.57	0.90	5.31	0.0015909
R	0.85	0.72	0.57	0.90	4.85	0.0025492
S	0.89	0.78	0.57	0.90	3.62	0.0136689
T	0.89	0.78	0.53	0.94	3.11	0.0279832
U	0.85	0.73	0.60	0.86	5.93	0.0008454
V	0.84	0.71	0.55	0.92	4.57	0.0034953
W	0.89	0.79	0.50	0.97	2.73	0.0496069

The adequacy of equation 3 was verified graphically as prescribed by Larsen (2005) and NIST (2013), some of which are presented in Figures 6 - 9. Again, the residuals spread evenly about zero but do not have any pattern. This also indicates that the assumptions of constant variance, zero mean and independence of error are satisfied. The normal probability plot for fuel

consumption shows that the random errors are normally distributed. The equation can therefore be described as good, (Larson, 2005).

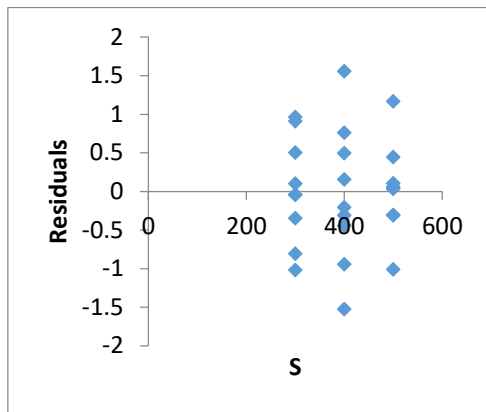


Figure 6: Residual Plot of Linear Knife Speed

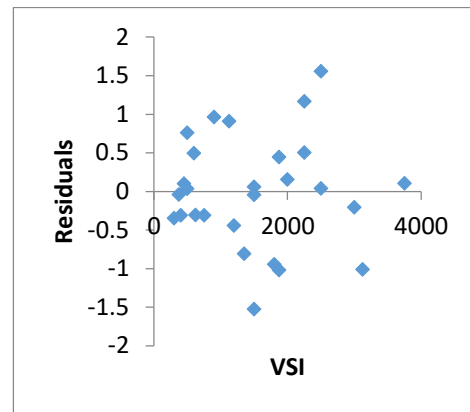


Figure 7: Residual Plot of Interaction of Operating Speed, Knife Speed and Reel Index

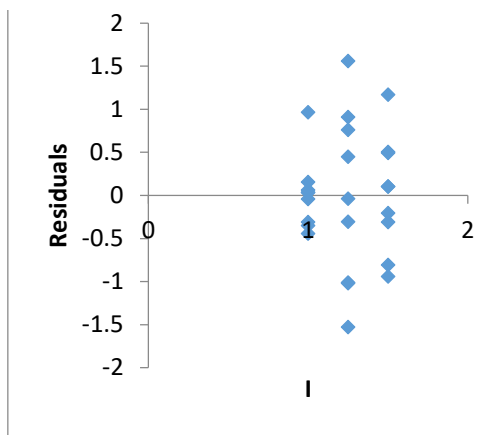


Figure 8: Residual Plot of Linear Reel Index

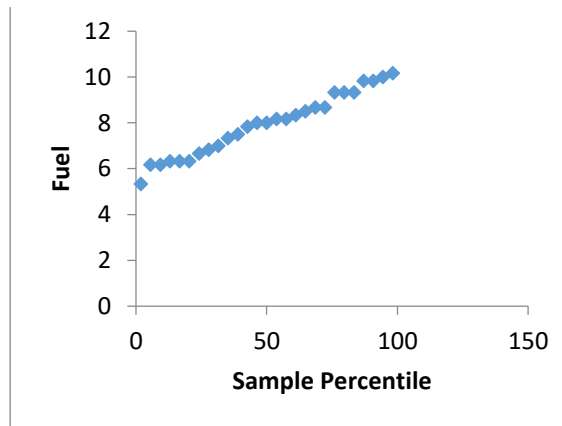


Figure 9: Normal Probability Plot of Fuel Consumption

4. CONCLUSION

Equations relating harvester material capacity (C_{mat}) and energy consumption (E) to the fundamental operating parameters and found to be polynomials in three variables. The equations relating material capacity to the fundamental operating parameters had $R^2 = 0.94$, $R^2_a = 0.88$, $SE = 2.47$, F -statistic = 14.49 and p -value = 0.0000209 and that relating energy consumption (E) to the fundamental parameters had $R^2 = 0.73$, $R^2_a = 0.60$, $SE = 0.68$, F -statistic = 5.93 and p -value = 0.0008454. Based on these values the equations were considered good for predicting the performance of the harvesting machine.

REFERENCES

- Abdi, R. and Jalali, A. (2013): Mathematical Model for Prediction Combine Harvester Header Losses, *International Journal of Agriculture and Crop Sciences*. 5(5): 549 - 552
- Chattopadhyay, P. S. and Pandey, K. (1999): Effect of Knife and Operational Parameters on Energy Requirement in Flail Forage Harvesting, *Journal of Agricultural Engineering Research*. 73: 369-376.

- Chinsuwan, W., Mongpraneet, S. and Panya, N. (1997): Optimum Harvest Period for Hom Mali Rice using Combine Harvester. *KKU Research Journal*. 2(1): 54- 63
- Chinsuwan, W., Ponjan N., Chuan-udom, S. and Phayom, W. (2004): Effect of Reel Index on Gathering Loss of Rice Combine Harvester, *TSAE Journal*. 11(1): 9 – 11
- Davies, O. L. (1956): *The design and analysis of industrial experiments*. 2nd Ed. Oliver and Boyd, Edinburgh. 159 – 271.
- Gregory, J. M. and Fedler, C. B. (1986): Model Evaluation and Research Verification (M.E.R.V), ASABE paper No. 86-5032. St Joseph, Michigan
- Hummel, J. W, and Nave, W. R. (1979): Impact Cutting of Soybean Plants. *Transaction of the ASABE*. 22(1): 35 - 39.
- Jalali, A. and Abdi, R. (2014): The Effect of Ground Speed, Reel Rotational Speed and Reel Height in Harvester Losses. *Journal of Agriculture and Sustainability* 5(2) 221-231
- Junsiri, C. and Chinsuwan, W. (2009): Prediction Equation for Header Losses for Combine Harvester when Harvesting Thai Hom Mali Rice, *Songklanakarin Journal of Science and Technology*. 31(6): 613 - 620
- Klenin, N. I., Popov, I. F. and Sakun, V. A. (1985). *Agricultural Machines: Theory of Operation, Computation of Controlling Parameters and Condition of Operation*. Amerind, New Delhi. 14-58
- Larsen, P. V. (2005): *Regression and analysis of variance*. Lecture notes ST111 Department of Statistics. University of Southern Denmark <http://statmaster.sdu.dk/courses/st111/index.html> accessed November 17, 2014.
- NIST (2013): NIST/SEMATECH e-Handbook of statistical methods, <http://www.itl.nist.gov/div898/handbook/>,2012 accessed November 10, 2013.
- Ogunlowo, Q. O and Olaoye, J. O. (2017). Development and Performance Evaluation of a Guided Horizontal Conveyor Rice Harvester. *Agrosearch: A Journal of Agriculture Food and Development*, 17(1); 66 – 88.
- Olaoye, J. O. (2000). Some Engineering properties of Castor Nut Relevant to the Design of Processing Equipment. *Journal of Agricultural Engineering Research (JAER)*. 77(1); 113 – 118
- Olaoye, J. O. and Adekanye, T. A. (2011). Analysis of the Motion of Weeding Tools and Development of a Rotary Power Weeder. *Journal of Agricultural Engineering and Technology (JAET)*, 19(2), 9-25.
- Olaoye, J. O. and Ariyo, E. O. (2020). Influence of Tillage Systems, Nutrient Application and Weed Management on Chemical Properties of Sandy Loamy Soil and Yield Components of Soybean. In 2020 ASABE Annual International Virtual Meeting (p. 1). American Society of Agricultural and Biological Engineers.
- Olaoye, J. O. and S. J. Bolufawi (2001). Design, Fabrication and Performance of a Multipurpose Row Planting Machine. *Journal of Sustainable Agriculture and the Environment (J. Sustain. Agric. Environ.)*. 3(1); 7 – 20.

- Olowojola, C. O., Faleye, T. and Adegbile, L. A. S. (2011): Development and Performance Evaluation of Leafy vegetable Harvester. *International Journal of Agricultural and Soil Science*, 1(7): 227-233
- Ott, R. L. and Mendenhall, W. (1994): *Understanding statistics*. 6th Ed. Wadsworth Publisher Company, Belmont, California. 444-585.
- Quick, G. R. (1999): *The Rice Harvester Reference*. RIRDC Rice Research and Development Program. RIRDC Publication 99(38).
- Sangwiji, P. and Chinsuwan, W. (2010): Prediction Equation for Losses of Axial Flow Rice Combine Harvester when Harvesting Khaw Dok Mali Rice Variety, *KKU Research Journal*. 15(1): 22 - 32
- Siebenmorgen, T. J., Andrews, S. B. and Counce, P. A. (1994): Relationship of the Height Rice is Cut to harvesting Test Parameters. *Transaction of the ASABE* 37(1), 67 - 69
- Tanam, U. I. (2021): Effect of Operating Speed, Knife Speed and Reel Index on the Material Capacity of an *Acha* Harvester. Unpublished PhD Thesis, Department of Agricultural and Biosystems Engineering, University of Ilorin, Ilorin, Nigeria.
- Tanam, U. I. and Babatunde, O. O. (1995): Interactive Effects of Some Implement Parameters on the Performance of the Disc Ploughs. *Journal of Agricultural Engineering and Technology* 3: 42-54.
- Tanam, U. I. and Olaoye, J. O. (2022). Determination of Crop and Machine Parameters Relevant to the Harvesting and Postharvest Handling of *Acha*, *Journal of Agricultural Engineering and Technology (JAET)*, 27(1): 52 - 61.
- Veerangouda, M., Sushilendra, K., Prakash, V. and Anantachar, M. (2010): Evaluation of Tractor Operated Combine Harvester. *Karnataka Journal of Agricultural Science*. 23(2), 282-285.
- Yore M. W., Jenkins, B. W. and Summer, M. D. (2002): Cutting Properties of Rice Straw. ASABE Annual International Meeting July 28 - 31, paper number 026154, ASABE, Chicago, Illinois, USA